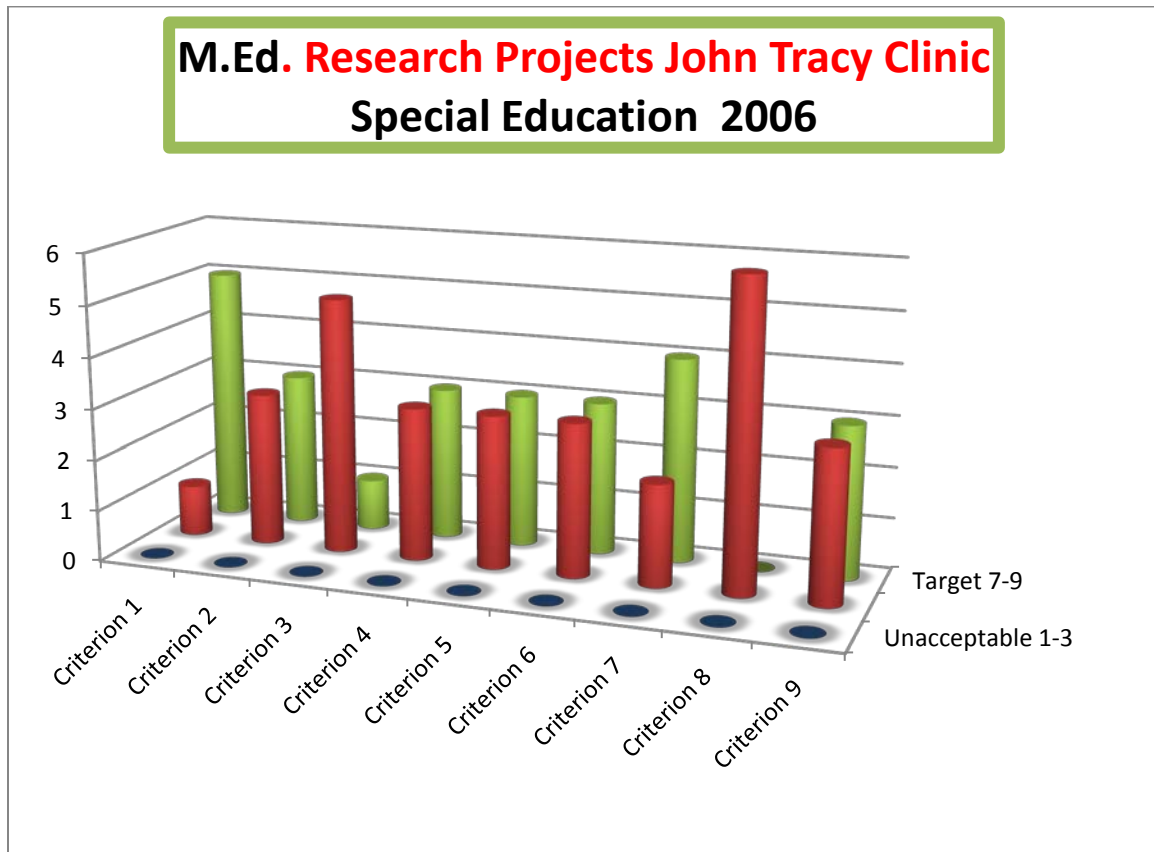
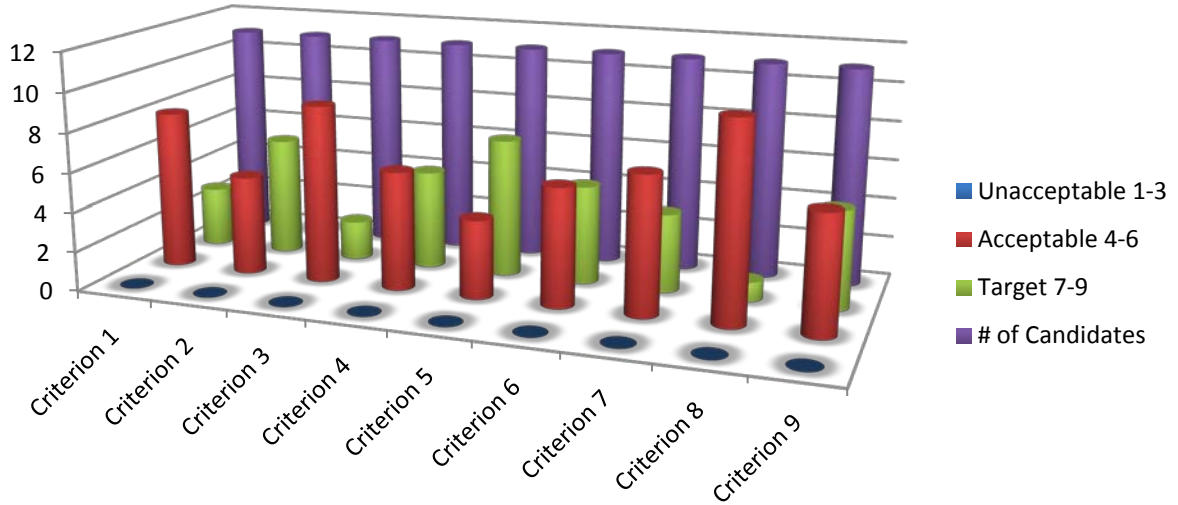


**John Tracy Clinic
Special Education Deaf and Hard of Hearing M. Ed. Research Project assessment**

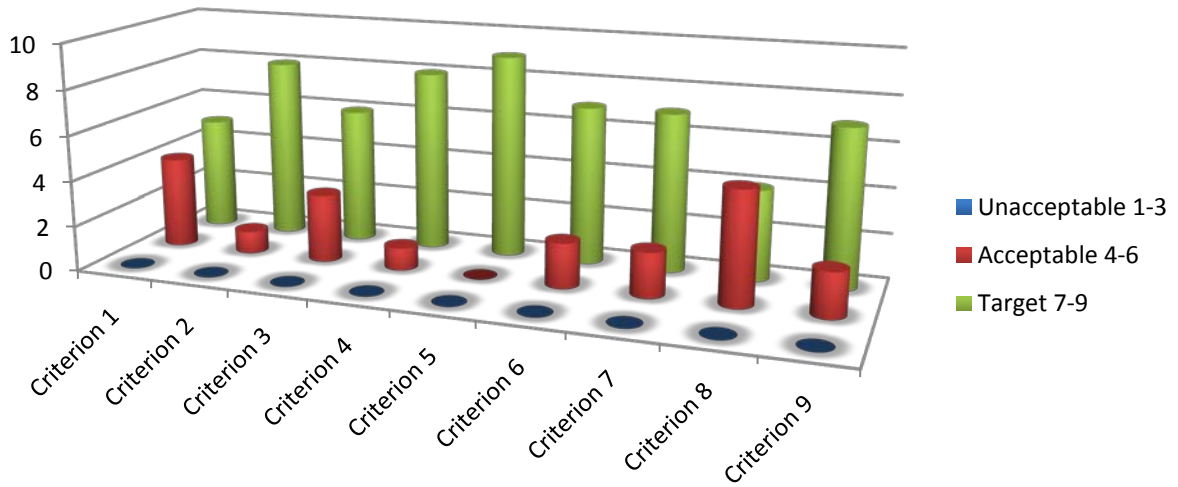
Criterion	Factors Evaluated
1	CSTP Domain 6: Develop as a Professional Educator - Candidate as M.ED. Researcher Scholar
2	CEC Standard 1 Foundations - Knowledge Base Relevant to Special Education and English Learners
3	APA Research Style Policies and Procedures Standards
4	CEC Standard 3 Individual Learning Differences
5	CEC Standard 9 Professional & Ethical Practices - Dispositions
6	Structural Organization & Clarity at an M.ED. Level of Performance
7	Logic & Persuasiveness Reflective of M.ED. Scholarship
8	'ACE' - SOLES unit overarching principles and value outcomes
	<i>A=Academic Excellence, Critical Inquiry & Reflection • C=Community & Service • E=Ethics, Values & Diversity</i>
9	Specialization Knowledge-Base



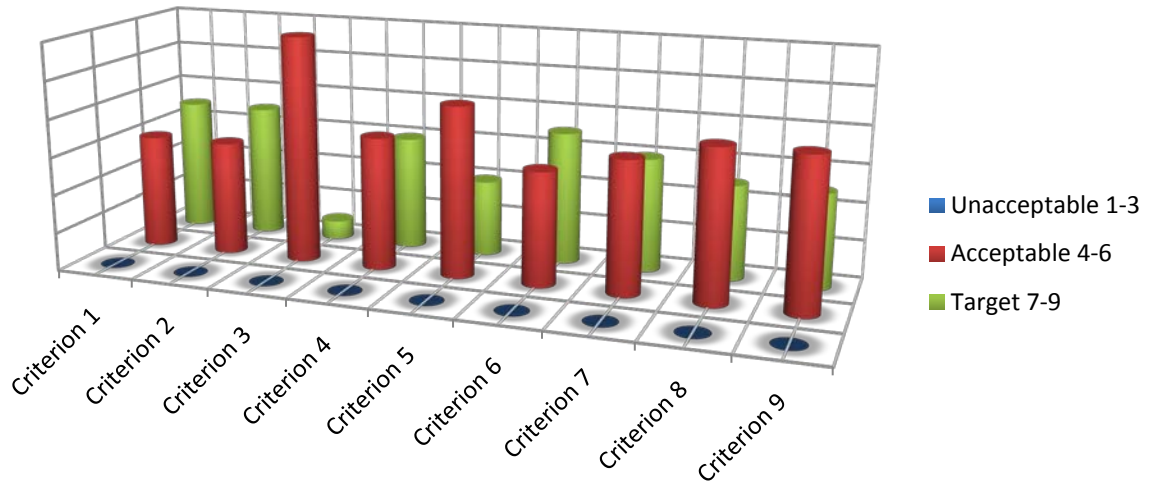
M.Ed. Research Projects John Tracy Clinic Special Education 2007



M.Ed. Research Projects John Tracy Clinic Special Education 2008



M.Ed. Research Projects John Tracy Clinic Special Education Deaf and Hard of Hearing 2009



M.ED. Research Projects John Tracy Clinic Special Education Deaf and Hard of Hearing 2010

